

## Structural engineering

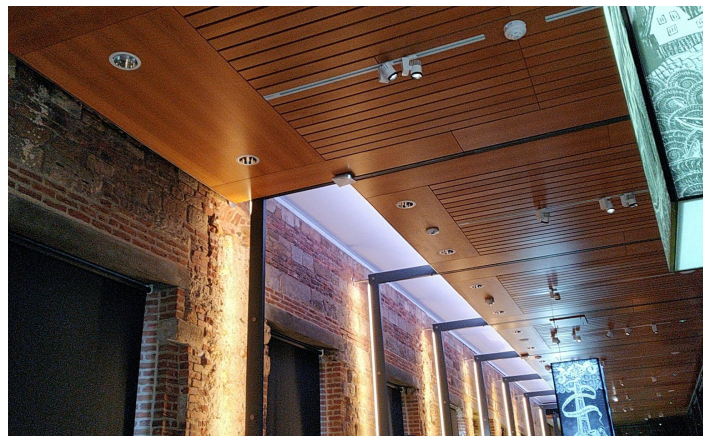
- Residential and commercial building structures
- Feasibility studies for development sites
- Heavy industrial development
- Modular building design
- Access and maintenance gantries
- Temporary works design and specification
- RAAC surveys and remedial design
- Site and soils investigation
- Sulphate attack specialists
- Confined spaces assessments
- Blast design



Poet's View, Whitby. Structural and civil engineering design to new residence.

## Cost consultancy

- Cost estimating and cashflow forecasts
- Tendering and procurement management
- Value management
- Contract administration / employer's agent
- Client representative
- Post-contract cost control and final accounts
- Due diligence and appraisals
- Insurance valuations



Cholmley House, Whitby Abbey. Roof refurbishment.

## Building surveying, CDM and project management

- NEC accredited project managers
- Building pathology
- Property repairs and specifications
- Contract administration / supervision to completion
- Structural / building surveys and reports
- Condition surveys and schedules of condition
- CDM services
- Contract advice and dispute resolution
- Party wall representation
- Dilapidation claims

## Expert witness services

- Civil and structural engineering disputes
- Building disputes
- Professional opinion reports
- Construction health and safety
- Construction regulations

## Growing on our regional tradition



### MASON CLARK ASSOCIATES

Church House  
44 Newland Park  
Kingston upon Hull  
HU5 2DW  
01482 345797

Unit E  
Millshaw Business Living  
Global Avenue  
Leeds LS11 8PR  
0113 277 9542

Partnership House  
Monks Cross Drive  
York  
YO32 9GZ  
01904 438005

[www.masonclark.co.uk](http://www.masonclark.co.uk)



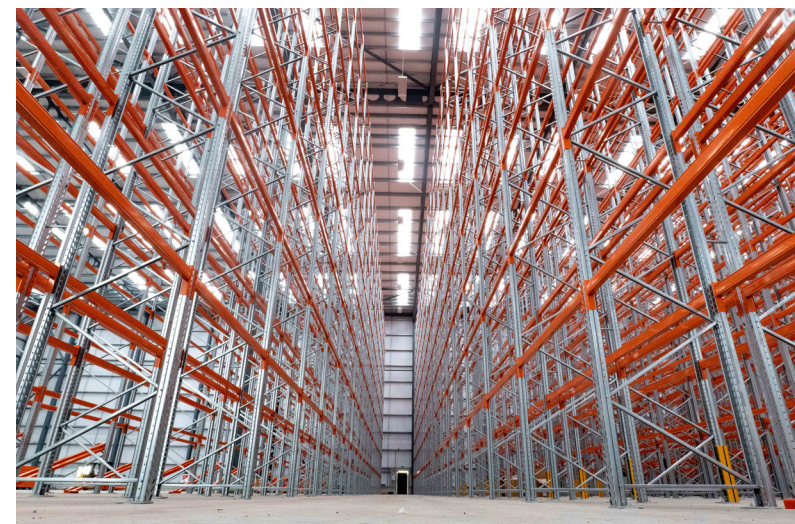
Mason Clark Associates: Registered in England No: 2537113

**ma** **30+**  
**masonclarkassociates**  
**engineering expertise everyday**



**Constructing Excellence National**  
**Civils Project of the Year 2022**  
Hessle Foreshore Tidal  
Flood Defence Scheme

Front cover: Hessle Foreshore flood alleviation scheme. Westland, new warehouse. Structural and civil engineering design.



[www.masonclark.co.uk](http://www.masonclark.co.uk)



Sutton Road Bridge Hull. Bascule bridge inspection.

## Civil engineering

- Flood risk assessments, drainage strategy, bulk earthwork
- Adoptable and private detailed drainage design
- Adoptable and private road and external works designs
- SUDs designs and urban regeneration support
- Flood alleviation design
- Retaining wall and slope stability solutions

## Bridge engineering

- Visual and intrusive inspections
- Assessment of existing structures
- Monitoring and management of substandard structures
- Production of maintenance and strengthening schemes
- Design of new highway and pedestrian structures
- Maintenance of moving bridges
- Wharfs, jetties, and marine structures

## 3D scanning and modelling

- Utilising the latest Faro series scanners and software
- All forms of measured surveys and monitoring
- Output in CAD plans and detailed Revit models
- Non-intrusive inspections and data capture
- Dimensional analysis
- Reverse engineering
- Virtual reality
- Mesh analysis and volumetrics
- Asset management
- Building Information Modelling (BIM)
- Traditional topographical surveys
- Archaeological recording

## Conservation engineering

- Engineer Accredited in Building Conservation (CARE)
- Heritage and conservation engineering
- Listed building refurbishment
- Historic parks and gardens
- Scheduled ancient monuments
- Monitoring and investigations
- Liaison with local authorities and conservation officers
- Urgent works and repairs notices
- Buildings at risk and managed ruins



Your needs will be met through our **innovation** and **best value service**.  
Your expectations will be exceeded through our **creative** and **practical solutions**.  
You will benefit from the **skills** and **experience** of our expert team.



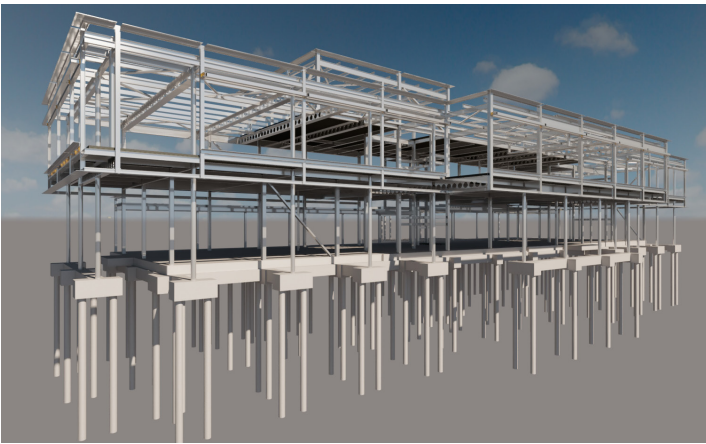
Wentworth Woodhouse. Conservation repairs to mansion house and stables.

Mason Clark Associates was established in 1990 and has grown to become one of the leading multi-disciplinary practices in the Yorkshire and Humber region with coverage of the whole of the UK. Our clients range from national companies, local authorities, and major contractors to developers and private individuals. Our success is based on delivering schemes we and our clients can be proud of, with significant repeat business.

You will receive a competitive professional service which is continually being reviewed with the contribution of our dedicated team members. You will benefit from a personal approach, with senior staff involved at all stages to ensure best practice, innovation, and economy. You, our client, are always put first.

Delivery of your objectives on time and within budget is of vital importance to us. This is achieved by tailoring our comprehensive services to suit your needs, with appropriate assignment of our highly qualified expert team based in our offices in Hull, Leeds, and York.

We develop the skills of all our technical teams through the relevant professional institutions. We are actively engaged with the Institution of Civil Engineers, Institution of Structural Engineers, and Royal Institution of Chartered Surveyors at both local and regional levels.



Hornsea Leisure Centre. Structural and civil engineering design.

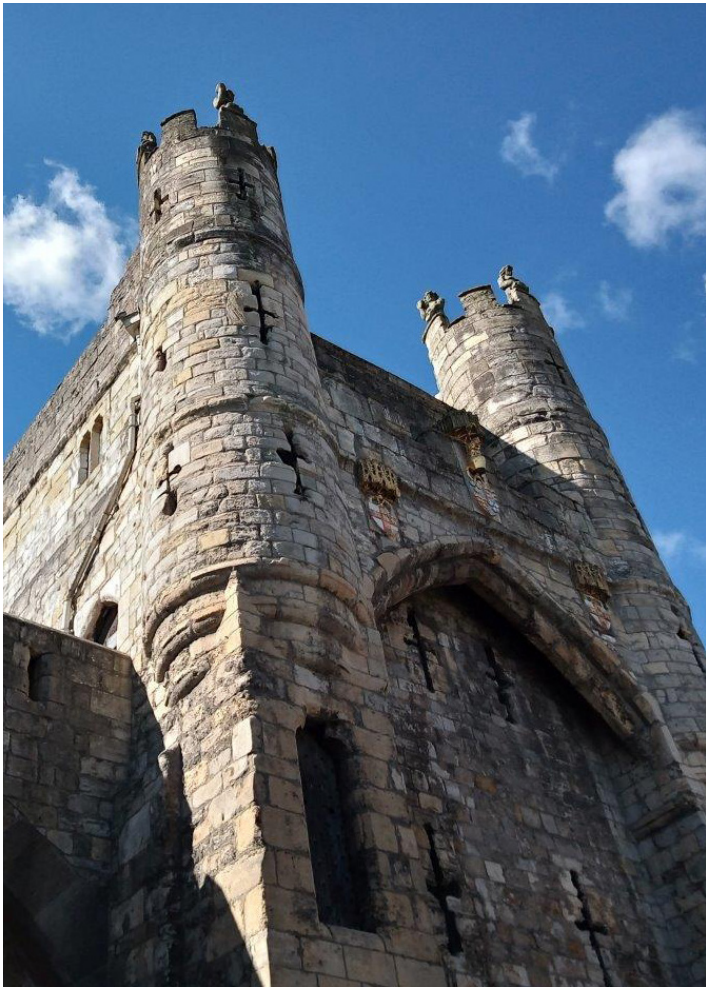


Leighton Grange, Cheshire. Organics recycling plant. Structural and civil engineering design.



Goole North Railway Bridge. Inspections.

Civil Engineering   Structural Engineering   Bridge Engineering   Conservation Engineering   Building Surveying   Cost Consultancy   Project Management & CDM



Monk Bar, York City Walls. Inspections and monitoring.



Camellia House, Wentworth Woodhouse. Refurbishment.



Kexby Old Bridge, York. Repairs and strengthening.



Great Barn, East Riddlesden Hall. Inspection and repairs.



Bourn Service Reservoir No. 4. Civil & Structural design.



Visitor centre for English Heritage at Rievaulx Abbey.